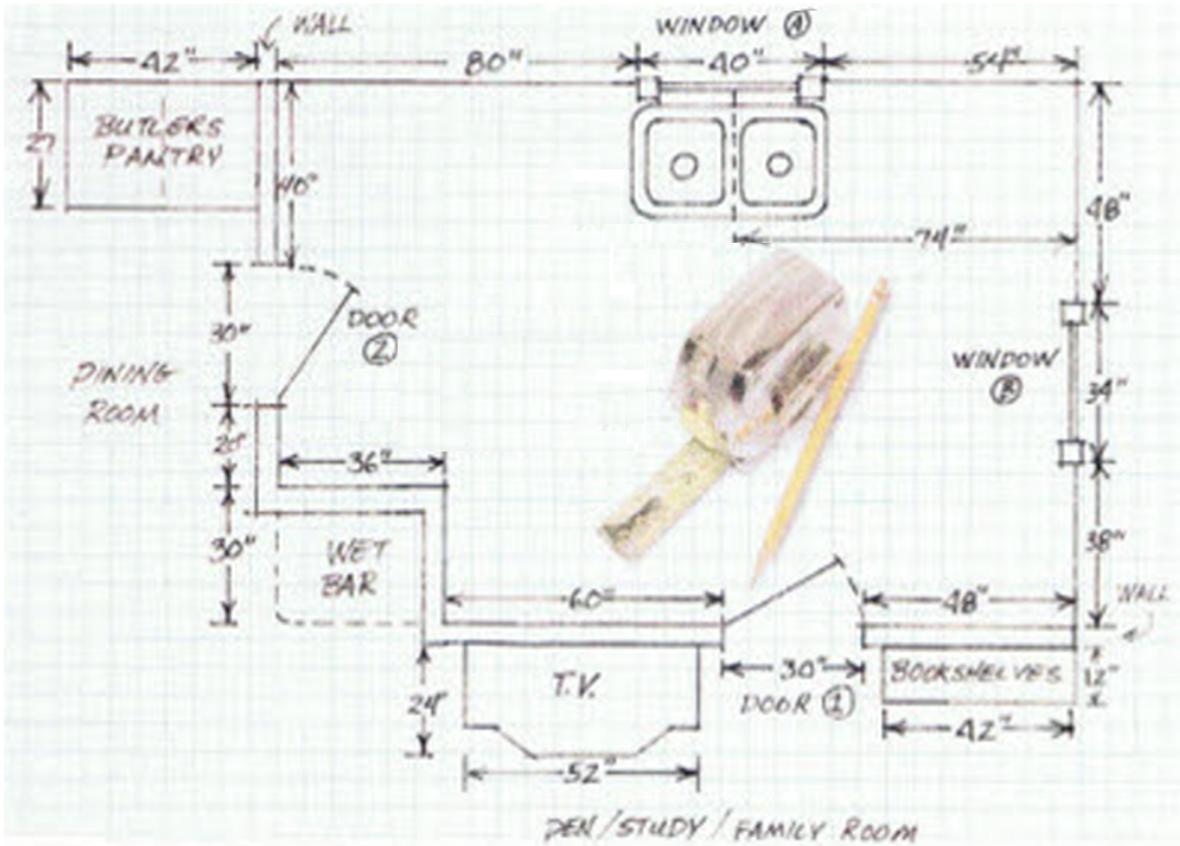


Measuring for your new Kitchen doesn't have to be difficult. All you need is a tape measure, pencil, and the provided plan grid. Use the sample grid below as a guide and create a sketch of the room.

1. Start in one corner of the room, select a wall and measure the distance, in inches, of every item on that wall from the corner. Write all measurements on your sketch.
2. Go to the next corner and locate every item on the next wall in relationship to that corner.
3. Continue to measure all around the room., until everything is located, measured and marked on your sketch.
4. Jot down the overall length of walls, height of the room, and distance of every item from the floor like outlets, light switches, and ledges or soffits.



Window and Door Schedule

1. Measure carefully and double check all measurements. Measure from outside of casing to outside of casing.
2. Mark direction of the door swing(s) on your sketch and on the grid, on provided floor plan grid.
3. Mark exact location of the sink, drains, gas lines, electrical outlets and switches on the provided floor plan grid.

WINDOWS

DOORS

	A	B	C	D		A	B	C	D
Width	"	"	"	"	Width	"	"	"	"
Window Height (H)	"	"	"	"	Floor to top of Moulding	"	"	"	"
Floor to Sill (H)	"	"	"	"	Window Casing Width	"	"	"	"
H + F/S Total	"	"	"	"	Door Casing Width	"	"	"	"